

Qmotion®



# Product Guide

Roller Shade Collection

QMotion shading systems are developed for simplicity, superior function and aesthetic elegance. QMotion has focused on developing automated window coverings that move quietly, more efficiently, and have batteries that last years longer than others. We also have the narrowest and tallest battery-powered shades in the market – **up to 15' tall for many fabrics.**

QMotion Qadvanced motorized roller shades are available in battery or wired configurations.



Through its patented design, QMotion offers the largest size of long-lasting battery-operated shades in the market. QMotion is also the only automated window treatment company that offers a patented manual override feature, allowing shading products to be operated by hand, remote, or a smart device.

Our automated roller shades are designed with a built-in safety stop braking system so they do not pass over the top when rising. This protects the motorized shade as well as walls and windows.

Made “safe by design,” QMotion is an industry leader in safety standards as all of the Qadvanced motorized roller shades and Qfree manual shades are cord free, making them safe for small children and pets. As well, silence is among the greatest of QMotion’s strengths - highlighted by “whisper quiet” design.

Design and decorative options abound in each motorized and non-motorized shade collection. Window coverings are offered in a wide range of functional fabrics and stylish colors as well as a full line of eco-friendly fabrics.



## QMotion offers state-of-the-art natural light control with the following benefits:

### Several different control options

- QMotion Shades offer the *convenience* of moving the shade up or down, stopping at the top, the bottom, two, three or four intermediate stops, or all with the touch of a button.

### Unmatched quietness

- QMotion engineers developed a shade with quiet operation for a beautiful and peaceful experience. Their counterbalanced movement is smooth and quiet due to precision steel ball.

### Distinctive designs

- Generous fabric collection of light filtering, decorative and beautiful, room darkening materials.
- QdR2 remotes and wall plates, and the QIS wall switches are available in 5 different colors: white, black, gray, ivory and light almond. If a color is not selected on the order form, the default color is white.
- **Industry leading light gaps** on the sides of the shades as small as 0.5" gap on each side, providing the most uniform and highest level of window coverage. Qadvanced only.
- Fabric width is 1" narrower than the specified bracket to bracket dimensions. Qadvanced only.

### Unparalleled simplicity

- QMotion battery automated shades are powered by an internal pack of standard D-cell or AA batteries depending upon shade size.
- The estimated average battery life is three years or more, dramatically reducing maintenance cost and adding convenience. (Shade size, usage and installation environment determine actual battery life.)
  - No cords - No electrician
  - No wires - No special tools
- QMotion battery operated shades are shipped with the batteries installed in the shade tube, for the convenience of our customers and ease of installation.



## QMotion shading systems allow for a customized experience.

### The look you want

- QMotion shades offer *several choices of fascia* to conceal the top of the roller shade tube and brackets. Choices include a painted fascia and a fabric wrapped fascia.

### The design you need

- Shades come in *either standard roll or reverse roll*. Standard roll shades have the fabric rolling off the back of the roll, close to the window, while reverse roll shades come off the front of the shade roll, and are further from the window glass. Reverse roll may be a preference for design purposes, or may be needed to permit the shade to lower clear of window obstructions.

### The number you want

- Our *dual shade system* allows users to choose a combination of two shades on the same window. Often used with a light filtering fabric in the front and with a room darkening fabric closest to the glass, QMotion dual shades are an excellent way to double treat a window in a small space.

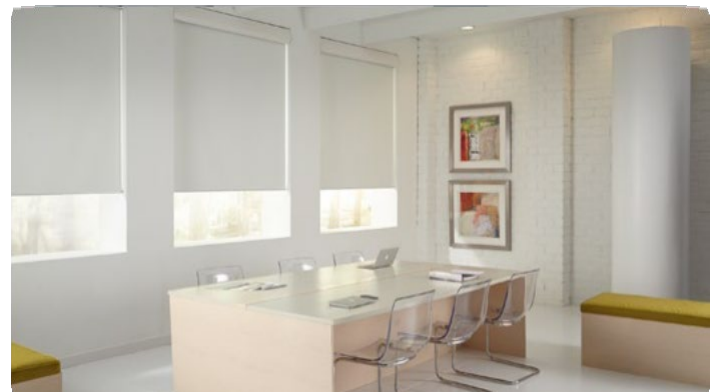


Battery powered QMotion Shades offer the same benefits as low voltage powered shades, and add the ability to install in difficult situations as well as function in the absence of electrical supply, without the need to run power to shades for battery operation. Because QMotion battery powered shades use an internal battery pack, there are no visible battery packs or wires to hide or see.

- Now you have the choice to upgrade from manual to motorized when you are ready with the Qbasic+ easily upgradable shade option.

### Safe by Design

- Shades come in an endless range of colors and finishes, but when buying shades for your home, you must consider the way they are operated.
- A shade which is safe by design is one that is cordless or has concealed or tensioned cords.
- Qadvanced and Qfree roller shades are cordless by design.



QMotion's automated window coverings work smoothly into smart home automation systems for residential use and in light commercial building automation systems, allowing for programmed control of shading systems in the daylighting design.

- Natural Daylighting Control
- Solar Heat Gain, Reduce Energy Costs
- UV Protection

### Shading Automation Benefits

- Increase user security & privacy, integrated with lighting and home automation systems.
- Include shades in "scene settings", such as home theater, conference room presentations.
- Timer based actions for raising and lowering shades with lighting, privacy, and security settings.
- Industry exclusive manual override for convenience, safety, and individual preferences.
- People want the ability to control their environment through light, temperature and overall comfort. One of the most effective tools are adaptable automation systems which become an important part of daylighting. They can control glare, temperature, natural and artificial light, and improve overall comfort.
- And when guests or children who aren't familiar with motorized shades tug on the shade -- no worries! They won't damage the motor with our patented technology.

### Distinctive designs and wide selection of elegant fabrics

Generous fabric collection of light filtering, decorative and beautiful room darkening, blackout materials. Choose from our popular eco-friendly and solar shade fabrics. Why are solar screen fabrics used?

- Control Natural Light
- Reduce Glare
- Maintain View
- Reduce Heat Gain
- Privacy
- UV Protection

### Fabric Choices for Shading Systems

#### Light Color Fabrics

- Provide high levels of visible transmission.

- Reflect high percentage of light to help keep out heat.
- Preserving levels of natural light, reducing need for artificial lighting.

#### Dark Color Fabrics

- Reduce visible light transmission (glare).
- Improve transparency during daylight hours, increasing exterior visibility.
- Meld with the glass, becoming almost invisible from the interior and exterior.

### Light Filtering vs Blackout Fabric - What's the difference?

**Light filtering fabrics** will block much of the light coming into your room. The fabric used in light filtering shades can be decorative or it can be technical fabric, like screens. These fabrics allow some light to pass through the fabric but still blocks some of the light. Additionally, some light will pass around all four sides, including the top, of the shade when installed.

**Blackout fabrics** are perfect when there is a need for more darkness. Blackout fabric has multiple layers that may block 100% of the light. While the fabric blocks the light, some light may get in through light gaps on the top, side, and bottom of your shades. The side gaps allow the shade to raise and lower without rubbing the sides of the window frame. For enhanced light control, you can cover these side and bottom gaps with light blocking side channels and sill rails. Considering that QMotion shades already offer the smallest light gap in the industry at 1/2 of an inch, adding Side Channels and Sill Rails reduces that even further.



## Have It Both Ways

The QMotion dual shade bracket system lets you choose to install a combination of two shades on the same window. With the dual shade convenient bracketing system, you can select a light filtering decorative fabric in the front with a room darkening fabric closest to the glass that you can control independently of one another. QMotion dual shade bracket system provides flexibility in light management, style, and choice. With QMotion's dual shade option, there is no need to compromise.

- Choose light filtering screen or decorative fabric for the front shade to admit the amount of light you want or to allow a clearer view outside if you prefer.
- Use a room darkening blackout fabric for the back shade to maximize light blocking and privacy.
- Control front and back shades separately with the QMotion Multichannel Remote for precisely the positioning that suits you.
- Fascias are available to enhance the appearance, conceal the shade system, and add to the light management capabilities.
- Available in low voltage, hardwired, or battery operated, all standard with our patented manual override feature.
- Special bracket design allows for easy installation even in windows with a small amount of depth.
- Only available in standard roll.

## Light Filtering vs Blackout Fabric - What's the difference?

Light blocking fabrics are available in two different grades, light filtering and blackout.

Light filtering fabrics will block much of the light coming into your room. The fabric used in light filtering shades can be decorative or it can be technical fabric, like screens. These fabrics allow some light to pass through the fabric but still blocks some of the light. Additionally, some light will pass around all four sides, including the top, of the shade when installed.

Blackout fabrics are perfect when there is a need for more darkness. Blackout fabric has multiple layers that may block 100% of the light. While the fabric blocks the light, some light may get in through light gaps on the top, side, and bottom of your shades. The side gaps allow the shade to raise and lower without rubbing the sides of the window frame. For enhanced light control, you can cover these side and bottom gaps with light blocking side channels and sill rails. Considering that QMotion shades already offer the smallest light gap in the industry at 0.5", adding Side Channels and Sill Rails reduces that even further. For complete light blockage, your installation may require architectural changes to the windows to ensure that they are square and flat, and you should consider outside mounted shades for the greatest level of light control.



**Simplicity, elegance, and affordability from QMotion coordinates a beautiful look.**

## Stand Out

In addition to providing glare and heat control, adding printed shades offer our customers endless design ideas for your projects. Ideal to display company logos, artwork, photographs, and additional display areas. Each shade is printed on-demand.

- Promotional signage
- Advertising
- Signs and banners
- Restaurants
- Showrooms
- Scenic designs
- Space dividers
- Exhibits

## Available Fabrics

Screens - 1%, 3%, 5%

Room Darkening-Avila, Flocké, SW 7000

## Size limitations

- We can print at the max roll width of the available fabrics. Maximum height for printing is 144".
- Please see your CSR for any shades needing larger prints.

## Available colors

- It is recommended to use white substrates for printing; however darker fabrics are available, but will incur a white ink surcharge.

## Strike Off Sample

- A strike off sample may be requested with a scaled down version of your print using the color selection and material. Cost for strike off samples may vary.

*Note: All quotes are custom, and all pricing is subject to change.*



# KOOLBLACK® TECHNOLOGY

## Innovative, Patented Technology. What is KOOLBLACK® Technology?

For the first time ever, KOOLBLACK® Technology incorporates reflective properties into dark color screen fabrics. This feature, coupled with the other benefits of dark colored fabrics, provides excellent contrast for a clear & sharp view through, color coordinated exterior building design, comfortable work environments, and maximized energy savings through reduced cooling costs.

### Total Screen Benefits

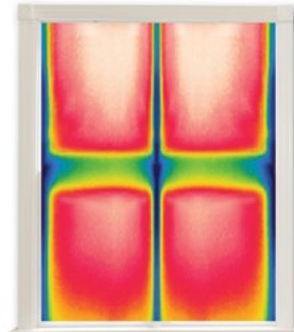
Only EScreen with KOOLBLACK® Technology can achieve all screen benefits:

- reduced temperature = lower cooling costs & comfortable work environments
- superior view through and glare control
- coordinated exterior building design and aesthetics - especially for commercial applications

50% of a buildings total energy consumption is used for heating and cooling which reduces heat and saves energy.

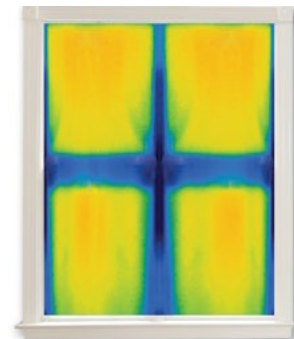
## KOOLBLACK® Technology at Work

Reduced cooling costs & improved comfort with the glare control and view-through benefits of dark fabrics.



Standard Dark Screen Fabrics

- high contrast for clear & sharp view through
- coordinated exterior building design
- exceptional glare control



E Screen with KOOLBLACK® Technology

- same great features as standard dark screen fabrics
- up to 23% improvement in Solar Heat Gain Coefficient which is the measure of heat reflectivity, (SHGC) / G Value versus standard dark screen fabrics
- reflects NIR (near infrared) solar energy